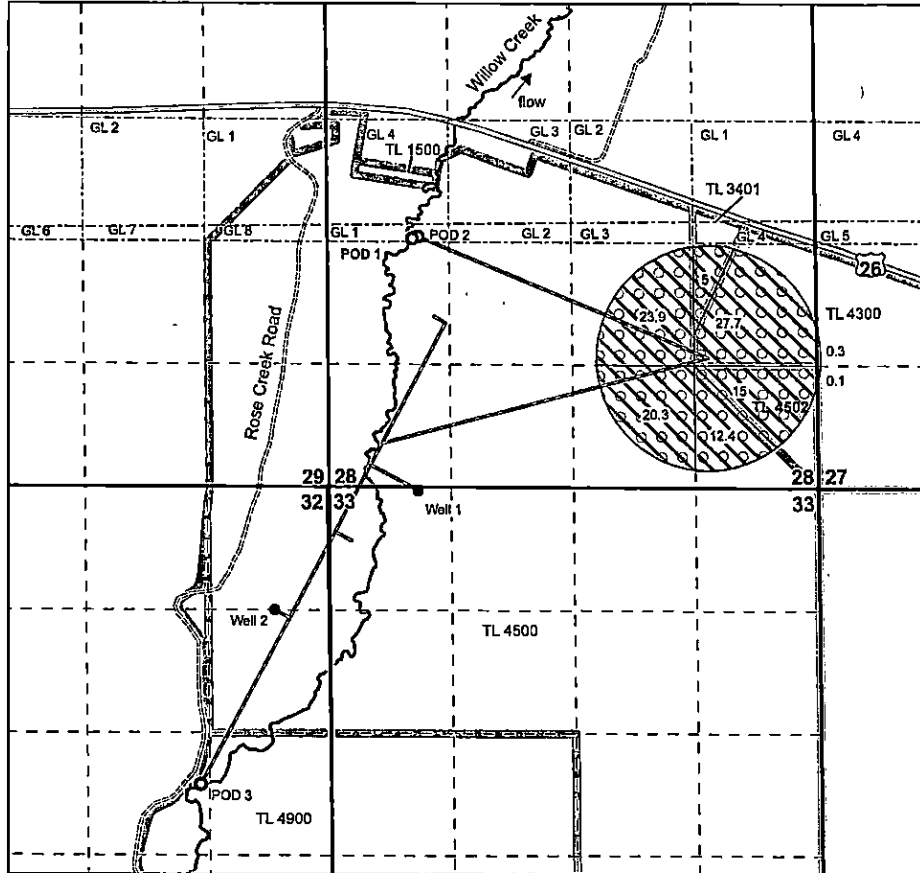


T14S, R39E, Sections 27, 28, 29, 32, 33, Willamette Meridian



Certificate 48389, Authorized POD 1 – SW¼ NW¼, Section 28, T14S, R39E, Willamette Meridian, 2670 feet North and 980 feet East from the SW Corner, Section 28.

Certificate 56242, Authorized POD 2 – SW¼ NW¼, Section 28, T14S, R39E, Willamette Meridian, 2650 feet North and 915 feet East from SW corner Section 28.

Certificates 48389 and 56242, Proposed APOD 3 – NW¼ SE¼, Section 32, T14S, R39E, Willamette Meridian, 540 feet South and 1400 feet West from the E ¼ Corner, Section 32.

Certificate 56243 Well 1 (MALH 43) – SW ¼ SW ¼, Section 28, T14S, R39E, Willamette Meridian, 1050 feet East from SW Corner Section 28.

Certificate 33312, Well 2 (MALH 41) – NE¼ NE¼, Section 32, T14S, R39E, Willamette Meridian, well located 525 feet West and 1300 feet South from the NE Corner, Section 32.

RECEIVED

APR 06 2020

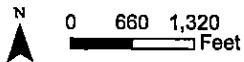
OWRD

- Points of Diversion
- Well
- Government lot line
- - - Quarter quarter line
- Section line
- Dirt road
- ==== Highway
- Pipeline
- Stream
- ▭ Tax lots
- ○ Certificate 33312 transfer to (priority 6/18/1962, primary groundwater)
- ▨ Certificate 48389 transfer to (priority 2/16/1972, supplemental surface water)



Expires 12/31/2020

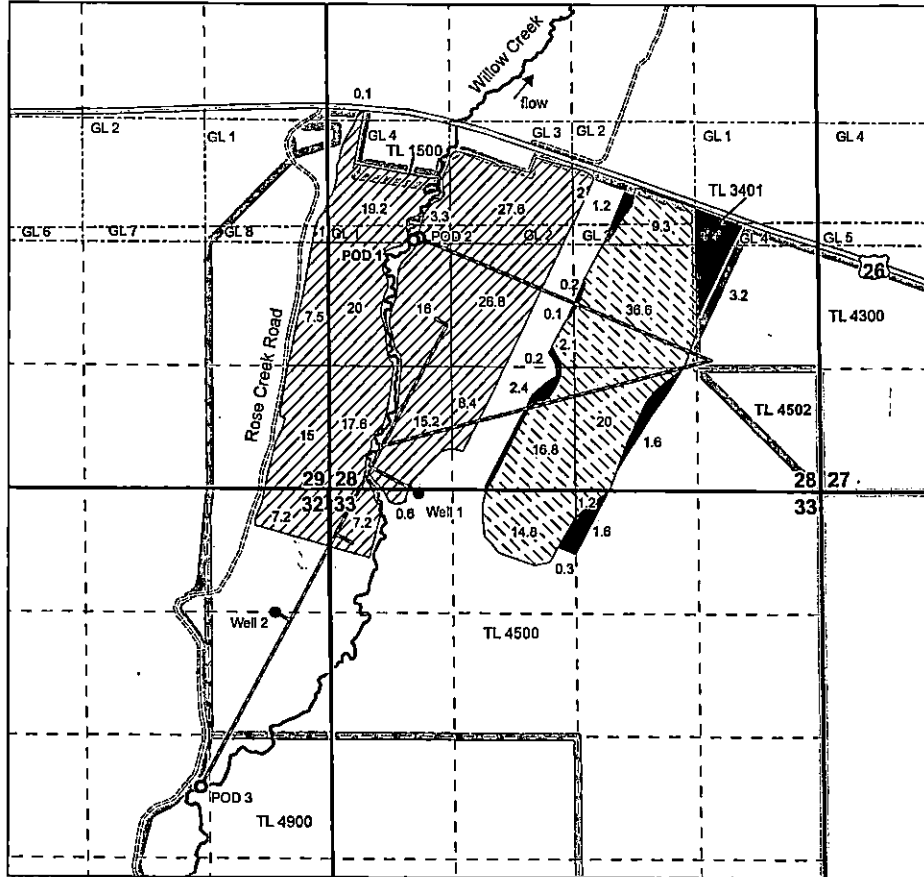
19404



This map is not intended to provide legal dimensions or locations of property ownership.

Transfer Map 4 of 4
Map prepared for Christopher James Ray and Anna R. Ray
Malheur County, Oregon

T14S, R39E, Sections 27, 28, 29, 32, 33, Willamette Meridian



Certificate 48389, Authorized POD 1 – SW¼ NW¼, Section 28, T14S, R39E, Willamette Meridian, 2670 feet North and 980 feet East from the SW Corner, Section 28.

Certificate 56242, Authorized POD 2 – SW¼ NW¼, Section 28, T14S, R39E, Willamette Meridian, 2650 feet North and 915 feet East from SW corner Section 28.

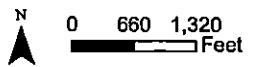
Certificates 48389 and 56242, Proposed APOD 3 – NW¼ SE¼, Section 32, T14S, R39E, Willamette Meridian, 540 feet South and 1400 feet West from the E ¼ Corner, Section 32.

Certificate 56243 Well 1 (MALH 43) – SW ¼ SW ¼, Section 28, T14S, R39E, Willamette Meridian, 1050 feet East from SW Corner Section 28.

Certificate 33312, Well 2 (MALH 41) – NE¼ NE¼, Section 32, T14S, R39E, Willamette Meridian, well located 525 feet West and 1300 feet South from the NE Corner, Section 32.

- Points of Diversion
- Well
- - - - Government lot line
- - - - Quarter quarter line
- Section line
- - - - Dirt road
- == Highway
- Pipeline
- Stream
- ▭ Tax lots
- Certificate 56242 transfer from (priority 2/9/1981, primary surface water)
- ▨ Certificate 56243 transfer from (priority 4/6/1977, supplemental groundwater)
- ▩ Certificate 56243 stay (priority 4/6/1977, supplemental groundwater)

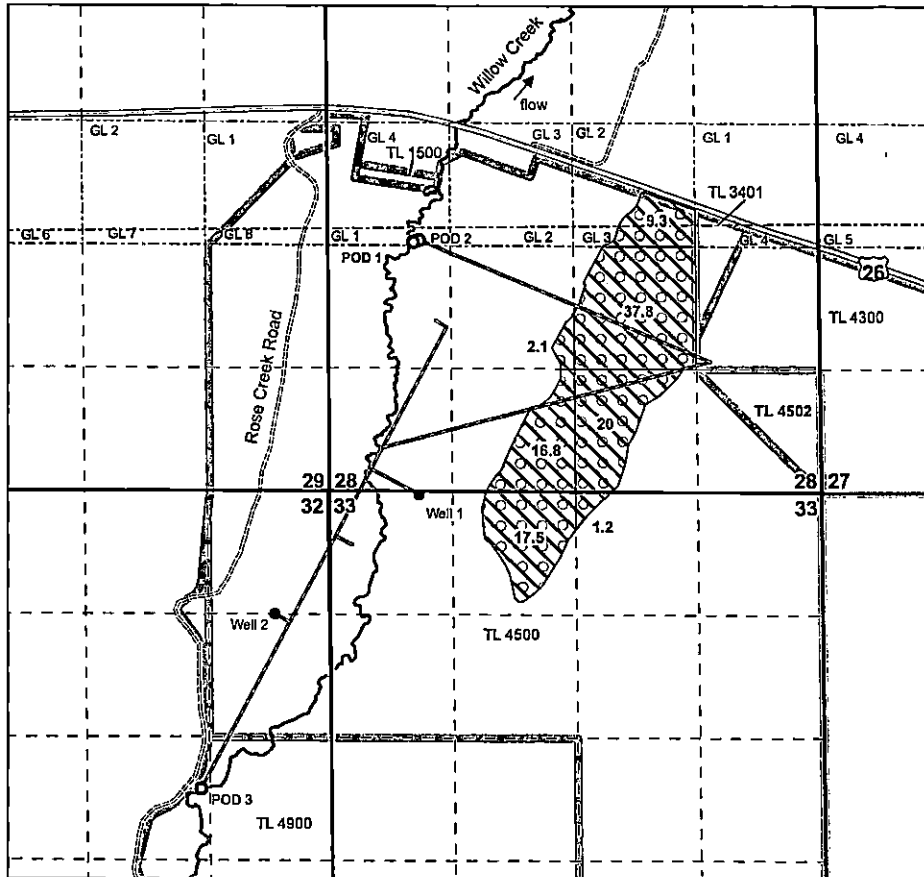
RECEIVED
APR 06 2020
OWRD



This map is not intended to provide legal dimensions or locations of property ownership.

18404

T14S, R39E, Sections 27, 28, 29, 32, 33, Willamette Meridian



Certificate 48389, Authorized POD 1 – SW¼ NW¼, Section 28, T14S, R39E, Willamette Meridian, 2670 feet North and 980 feet East from the SW Corner, Section 28.

Certificate 56242, Authorized POD 2 – SW¼ NW¼, Section 28, T14S, R39E, Willamette Meridian, 2650 feet North and 915 feet East from SW corner Section 28.

Certificates 48389 and 56242, Proposed APOD 3 – NW¼ SE¼, Section 32, T14S, R39E, Willamette Meridian, 540 feet South and 1400 feet West from the E ¼ Corner, Section 32.

Certificate 56243 Well 1 (MALH 43) – SW ¼ SW ¼, Section 28, T14S, R39E, Willamette Meridian, 1050 feet East from SW Corner Section 28.

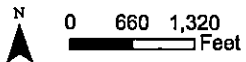
Certificate 33312, Well 2 (MALH 41) – NE¼ NE¼, Section 32, T14S, R39E, Willamette Meridian, well located 525 feet West and 1300 feet South from the NE Corner, Section 32.

RECEIVED

APR 06 2020

OWRD

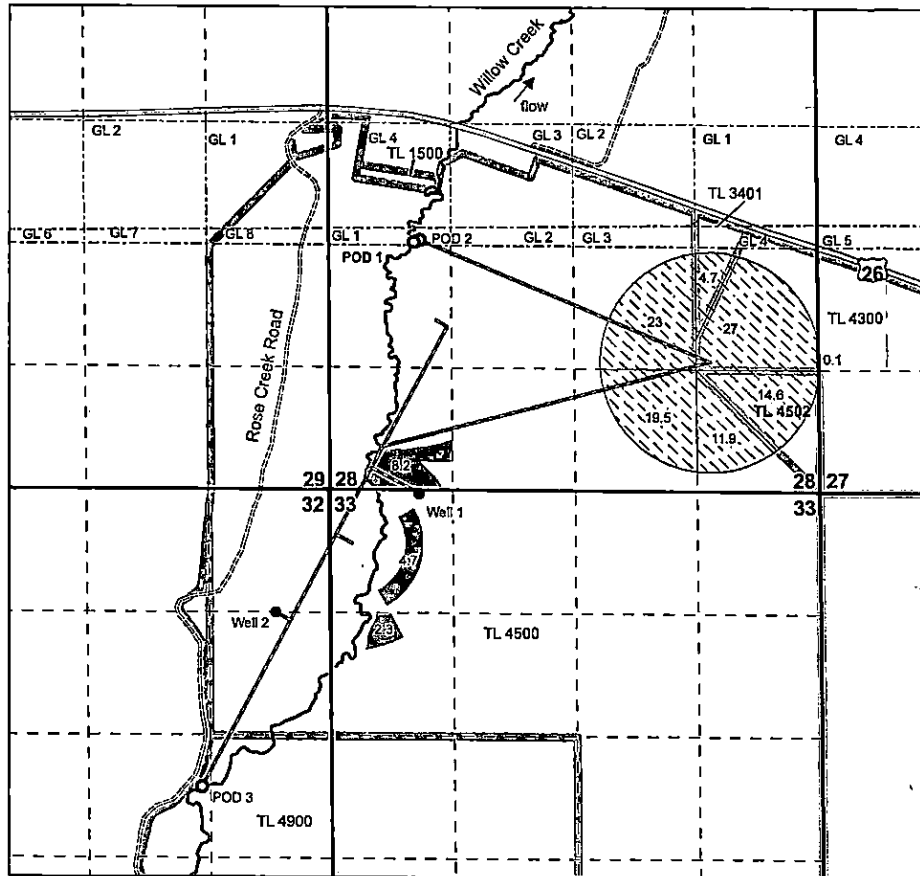
- Points of Diversion
- Well
- Government lot line
- - - Quarter quarter line
- Section line
- Dirt road
- ==== Highway
- Pipeline
- Stream
- ▭ Tax lots
- ○ Certificate 33312 transfer from (priority 6/18/1962, primary groundwater)
- ▨ Certificate 48389 transfer from (priority 2/16/1972, supplemental surface water)



This map is not intended to provide legal dimensions or locations of property ownership.

19404

T14S, R39E, Sections 27, 28, 29, 32, 33, Willamette Meridian



Certificate 48389, Authorized POD 1 – SW¼ NW¼, Section 28, T14S, R39E, Willamette Meridian, 2670 feet North and 980 feet East from the SW Corner, Section 28.

Certificate 56242, Authorized POD 2 – SW¼ NW¼, Section 28, T14S, R39E, Willamette Meridian, 2650 feet North and 915 feet East from SW corner Section 28.

Certificates 48389 and 56242, Proposed APOD 3 – NW¼ SE¼, Section 32, T14S, R39E, Willamette Meridian, 540 feet South and 1400 feet West from the E ¼ Corner, Section 32.

Certificate 56243 Well 1 (MALH 43) – SW ¼ SW ¼, Section 28, T14S, R39E, Willamette Meridian, 1050 feet East from SW Corner Section 28.

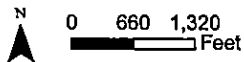
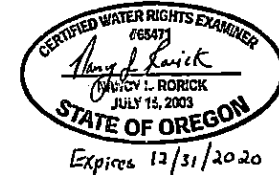
Certificate 33312, Well 2 (MALH 41) – NE¼ NE¼, Section 32, T14S, R39E, Willamette Meridian, well located 525 feet West and 1300 feet South from the NE Corner, Section 32.

RECEIVED

APR 06 2020

OWRD

- Points of Diversion
- Well
- - - - Government lot line
- - - - Quarter quarter line
- Section line
- - - - Dirt road
- == Highway
- Pipeline
- Stream
- ▭ Tax lots
- ▨ Certificate 56242 transfer to (priority 2/9/1981, primary surface water)
- ▩ Certificate 56243 transfer to (priority 4/8/1977, supplemental groundwater)



This map is not intended to provide legal dimensions or locations of property ownership.

13404

Transfer Map 3 of 4
Map prepared for Christopher James Ray and Anna R. Ray
Malheur County, Oregon