

● Stock water only
 From Hot springs
 Pen. # 49681
 8-9-1985

● 1880 Decree
 Ploted To $\frac{1}{4}$ $\frac{1}{4}$
 No Number for
 each $\frac{1}{4}$ other than
 Part of 600 ac

● 1873 Decree
 also appears to
 be 1880 ? Part of
 600 NOT Mapped only
 special file to $\frac{1}{4}$ $\frac{1}{4}$

● 1887 Decree
 surplus of Flood
 water's of F. 10 mile -
 inc. springs
 for 250 ac only
 Ploted to $\frac{1}{4}$ $\frac{1}{4}$
 No Number of ac
 in each $\frac{1}{4}$ given

22

23

27

26

34

35

14

40

40

40

25.6

1.9

20.2

32.6

7.4

40

40

18.8

40

40

31.3

23.6

40

40

22.6

40

40

1.8

4660

5'
4659

4657

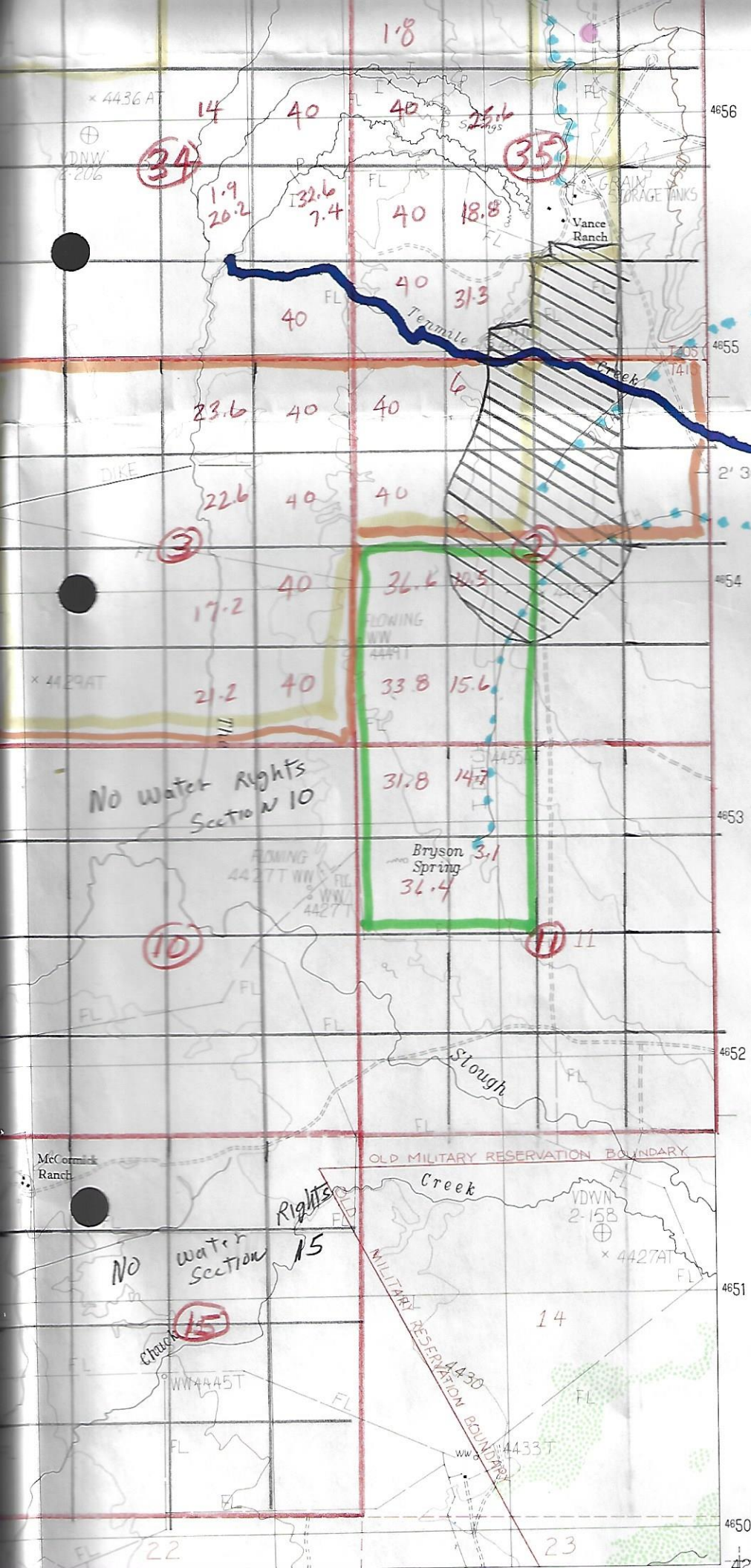
4656

4655

2' 30"

170,000
FEET

Water Springs
for 250 ac. only
Ploted To 1/4 1/4
No Number of ac.
in each 1/4 given



Well
G-7393
199.9 ac.

No water Rights
Section 10

No water
Section 15

Rights

OLD MILITARY RESERVATION BOUNDARY

MILITARY RESERVATION BOUNDARY

465000m N