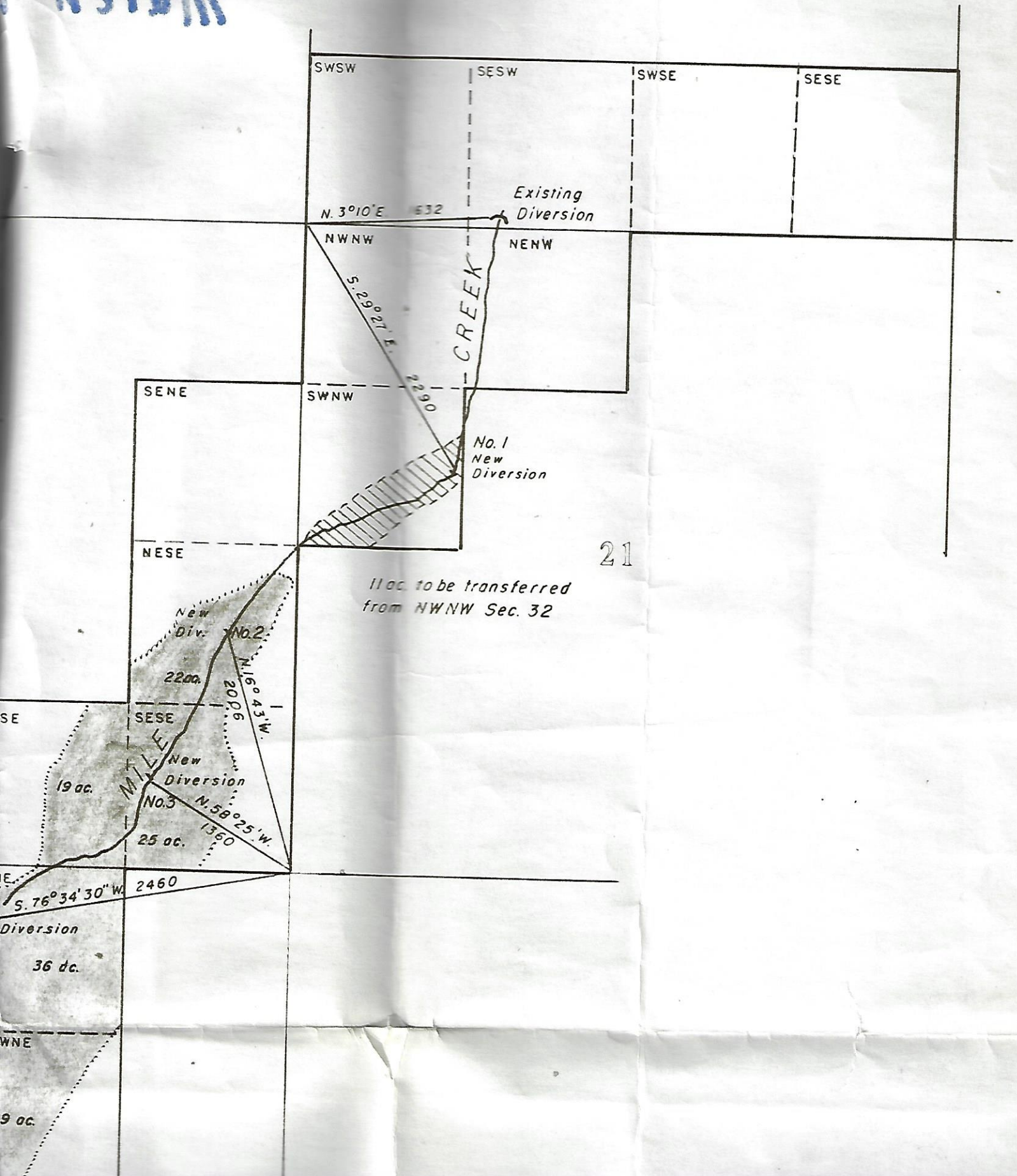


791019
Morton

16



21

11 ac. to be transferred from NWNW Sec. 32

30

22 ac.

TEN

29

NWSW

NESW

15 ac.

36 ac.

SESE

SWSW

WELL

(To be drilled)

33 ac.

N 36° 04' E.
1001

R. 42 E.

Found Iron Fence Post
Rock

NENW

NWNE

NENE

NW. W

Transfer applied for
to SWNW Sec. 21

21 ac 1884

31 ac.

2 ac.

11 ac.

LOT 2

SESW

SWNE

2 ac.

18 ac.

9 ac.

R. 43 E.

LOT 3

95

U. S.

End $\frac{1}{4}$ Rock

T. 40 S.

32