
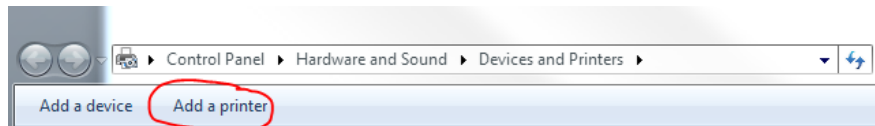


# Adding a Network Printer

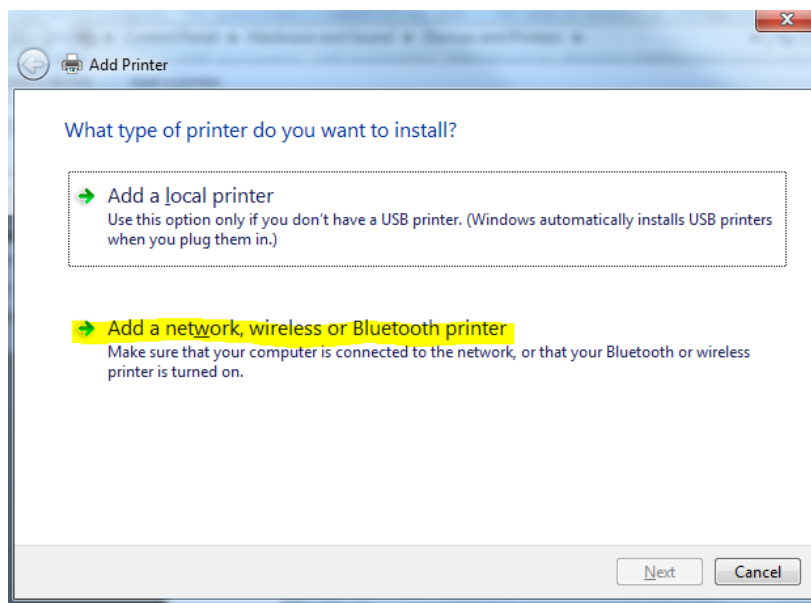
---

You may find that you need to use a network printer that is not already installed on your PC. To add a network printer, follow these steps. If you need assistance, or have problems, please contact IT Support.

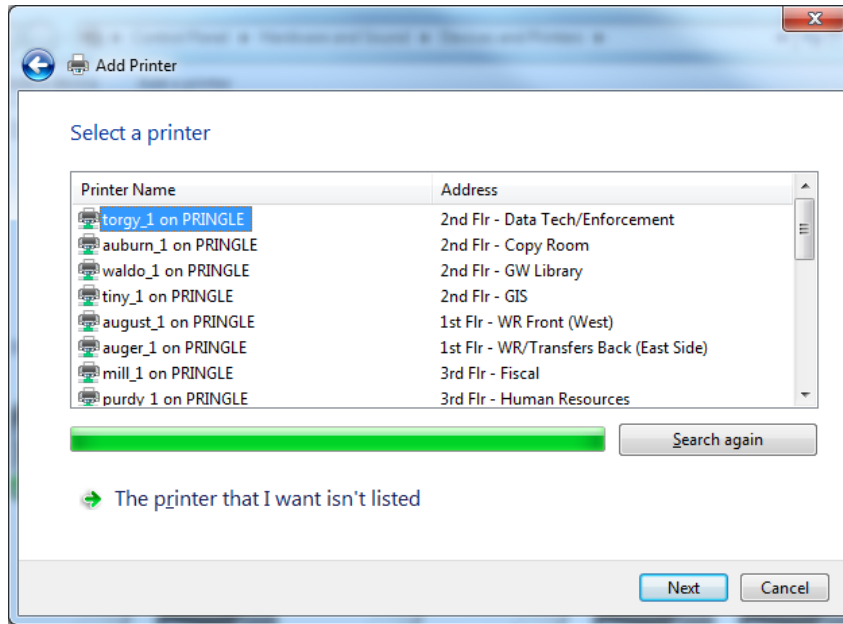
1. Open Devices and Printers by clicking the **Start** button , and then, on the Start menu, clicking **Devices and Printers**.
2. Click **Add a printer**.



3. In the Add Printer wizard, click **Add a network, wireless or Bluetooth printer**.



- In the list of available printers, select the one you want to use, and then click **Next**.



- If prompted, install the printer driver on your computer by clicking **Install driver**. If you're prompted for an administrator password please call your network administrator.
- Complete the additional steps in the wizard, and then click **Finish**